

"new waltz"

Frank Duvall

jazz waltz

q=120

$B^{\flat}\Delta$
F

$G^{\flat}\Delta(\#11)$
F



$B^{\flat}\Delta$
F

$G^{\flat}\Delta(\#11)$
F



$B^{\flat}\Delta$
F

A \emptyset 7
F

D7(b9)
F#

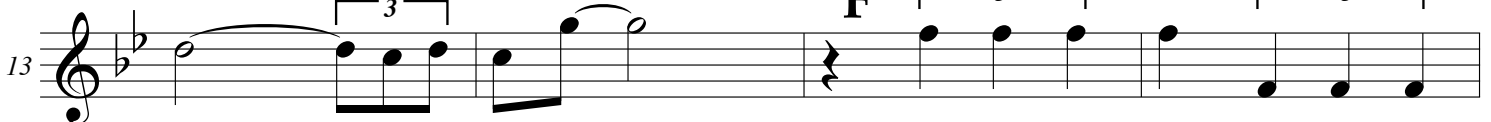


G-7

C7

C-7
F

F7



$B^{\flat}\Delta$
F

$G^{\flat}\Delta(\#11)$
F

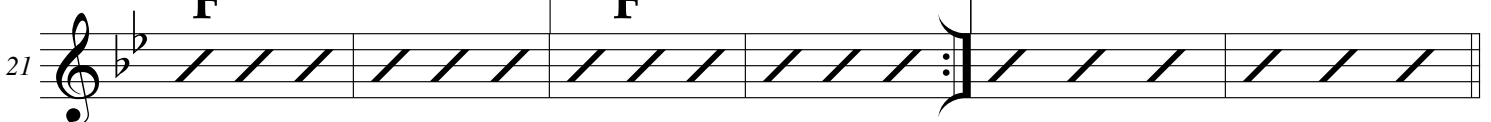


$B^{\flat}\Delta$
F

1. $G^{\flat}\Delta(\#11)$
F

2. F-7

E7



E \flat 9

E \emptyset 7

A7(b9)

D-7

G7(#5)



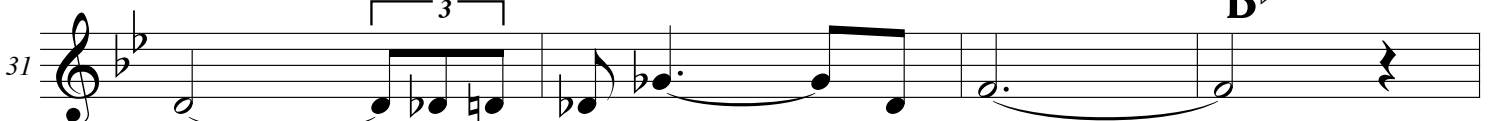
C-7

F7(#5)

B \flat 9

F-7
B \flat

B \flat 7



35 $\frac{E^{\flat 9}}{B^{\flat}}$ $\frac{E^{\circ 7}}{B^{\flat}}$ $\frac{A 7(b9)}{B^{\flat}}$ $\frac{D-7}{A}$ $\frac{G 7(\#5)}{A^{\flat}}$

39 $G-7$ $\frac{C 7}{E}$ $\frac{C-7}{F}$ $F 7$

43 $\frac{B^{\flat \Delta}}{F}$ $\frac{G^{\flat \Delta}(\#11)}{F}$

47 $\frac{B^{\flat \Delta}}{F}$ $\frac{A^{\circ 7}}{F}$ $\frac{D 7(b9)}{F^{\#}}$

51 $G-7$ $C 7$ $\frac{C-7}{F}$ $F 7$

55 $\frac{B^{\flat \Delta}}{F}$ $\frac{G^{\flat \Delta}(\#11)}{F}$

59 $\frac{B^{\flat \Delta}}{F}$ $\frac{G^{\flat \Delta}(\#11)}{F}$

D.S. for solos